



## house of glass

A gallery-like home demonstrates the values of creative space-configuration.

Text by Environmental Design Practice Sdn Bhd Additional text by Abdul Aziz Drain Photography by Gerry Chin

ABOVE  
Sitting pretty.

OPPOSITE PAGE  
Stack 'em up.

Fundamentally, there is no definitive template to what constitutes a home. Different people have different living needs in response to their geography, climate and culture. Ideally, these factors should come into play in the eventual design of a house. Hence, the building must be 'at peace' with its surrounding, respecting the sense of place of its site. For the builders of the home i.e. the architects, technology is as vital an influence as anything else. It is essential to understand the reasons behind traditional solutions and if they are valid, to adapt and rationalise them with technology. The architecture practised by Environmental Design Practice addresses this dichotomy of place and technology. The firm finds it more profound to be simple and more elegant to be pure; an approach which they dub 'simplistic elegance'.

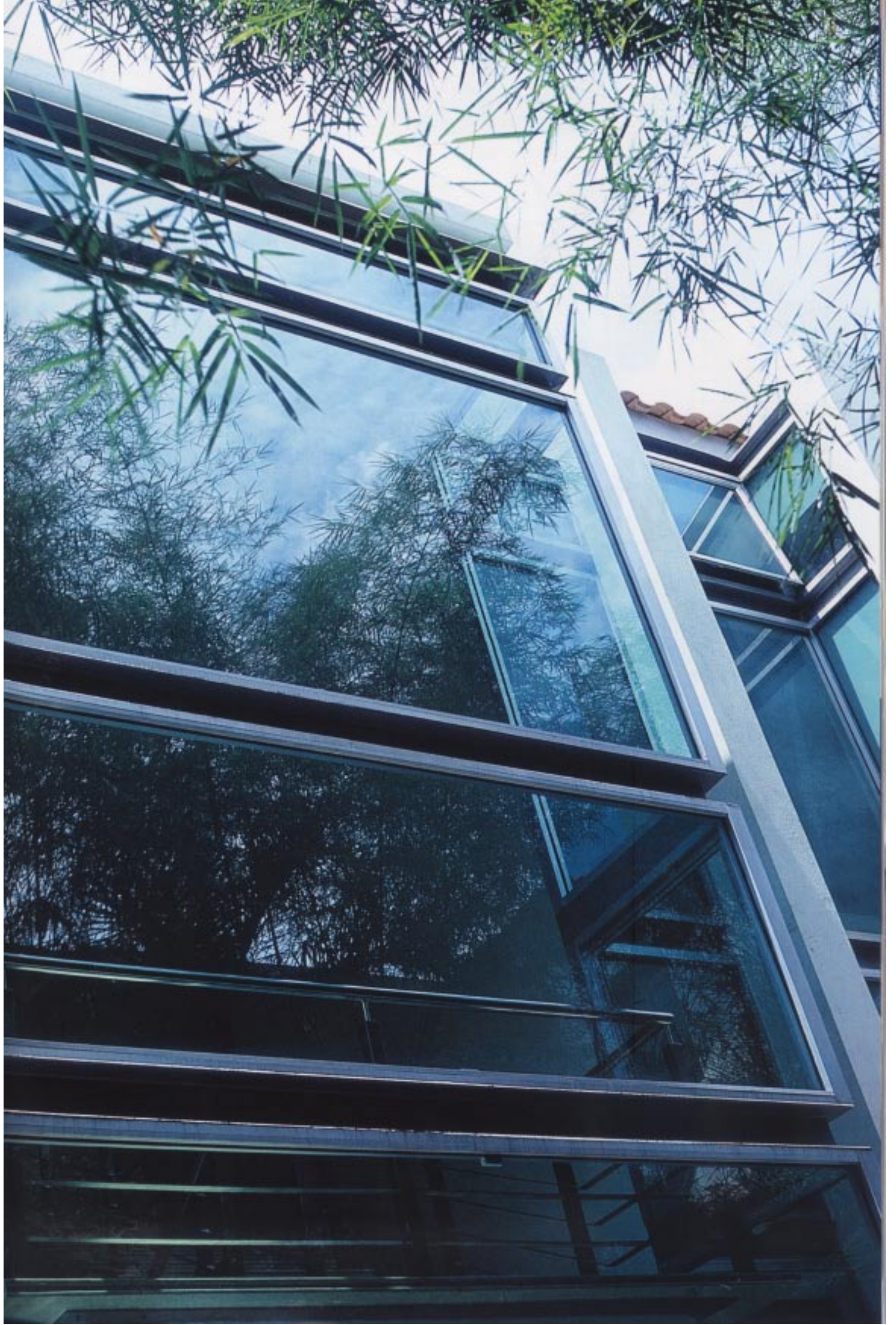
### Express Yourself.

The Lim House is an example of this approach. A double-storey detached with a built-up area of about 5,500 square feet, it is located on the higher ground of Sierramas Phase 1A development in Sungai Buloh. The site of 11,000 square feet has the clear advantage of a north-south orientation

with a rather deep valley at the rear boasting lush vegetation, park facility and jogging tracks. The client's brief was simple, almost purely functional for a relatively young, down-to-earth family of five. This was eventually interpreted into a house that is modern but not trendy, which allows the expressive power of space to generate architectural solution and meaning.

### Halves of a Whole.

By slicing a rectangular block in two then sliding and articulating the masses with an interlocking space, a sense of enclosure is achieved. Nevertheless, glass walls further open up the interiors, visually bringing the external into the internal. Apart from that, the double-height volume at the centre of the building connects spaces vertically. The house is not unlike a gallery, granting uninterrupted views of the lush landscape outside. Such an effect renders the house to be less of a circulation space but more of a point of conjugation. Moreover, the profusion of natural light imbues the house with life. Light is used to explore and reveal the intrinsic quality of form coming to terms with technology.





**ABOVE**  
Comfort wood.

**RIGHT**  
Lightness of living.

defining the quality of spaces in the process. This design approach also comes with the opportunity to easily introduce cross ventilation as well as minimum consumption of artificial lighting, thus making way for the provision of hard and soft landscaping on all sides of the building. In addition, ponds with freestanding walls for privacy are strategically placed. Décor Ease Interior & Construction Sdn. Bhd., the interior designer engaged by the client, carried on the theme of simplicity and contrast with modern, simple furniture and fittings to complement the architectural planes. Elegance and simplicity in architecture are of process, not merely of product. The process starts with an understanding that develops with care and attention. The clients provide the need, and the architect translates it into form. Architecture emerges and rises on an aesthetic wave. True judgment quietly sleeps but a good building speaks for itself and the Lim house speaks volumes. ☐

Environmental Design Practice    tel: 603 9508 1101  
www.edparchitects.com.my

